



www.bluestarpetro.com



LINEAR LOW-DENSITY POLYETHYLENE LL235F6

" LL-235F6 " is a linear-low density polyethylene resin (LLDPE), obtained by a gas phase technology process. This grade is designed for the production of different types of films and agricultural tapes. In this grade, excellent processability, mechanical properties, melt strength, and durability are achieved based on the balanced molecular weight and molecular weight distribution. LL-235F6 has good sealability and is approved for food contact applications.

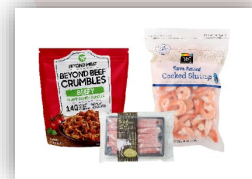
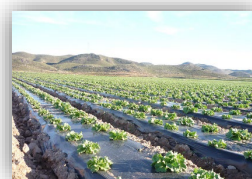
Producer:

Jam Petrochemical Company

NO	Property	Value	Units	Test Method
1	Melt Index (190°C/ 2.16Kg)	0.6	g/10 min	D1238
2	Density	0.922	g/cm ³	D1505
Thermal properties @				
3	Flexural modulus	107	°C	D1525
4	Notched Izod impact at 23°C	127	°C	D3418
Mechanical Properties @				
5	Flexural modulus	350	MPa	D790
6	Tensile Strength at Yield	10/11 (MD/TD)	MPa	D882
7	Tensile Strength at Break	45/25 (MD/TD)	MPa	D882
8	Tensile Elongation at Break	>600	%	D882
9	Elmendorf Tear	120/450 (MD/TD)	gr	D1922
10	Hardness	55	Shore D	D2240
11	ESCR	>1000	hr	1693

Applications:

- Agricultural Films and Tapes
- Lamination
- Shrink Film
- Industrial Films, Frozen Food Packaging



For more information, Price lists & direct purchases, please get in touch with us
Please Scan for Contact us on WhatsApp



Social Media: +447700313096

Call: +989128145560

Info@bluestarpetro.com

sales@bluestarpetro.com

Atakent MH.221.SK, Istanbul, Turkey

Qods St, Keshavarz Blvd. Tehran, Iran